

[China Investment casting machining parts, Manufacturer, Supplier, Factory, Exporter in china](#)

Investment casting, also called lost-wax casting, is one of the oldest known metal-forming techniques. The process is generally used for small castings, but has produced complete aircraft door frames, steel castings of up to 300 kg and aluminium castings of up to 30 kg. It is generally more expensive than die casting or sand casting, but can produce complicated shapes that require little rework or machining.

Investment casting is used in the aerospace and power generation industries to produce single-crystal turbine blades, which have more creep resistance than equiaxed castings. It is also widely used by Sturm, Ruger among other firearms manufacturers to fabricate firearm receivers, triggers, hammers, and other precision parts at low cost. Other industries that use standard investment-cast parts include military, medical, commercial and automotive.

Material Range: stainless steel, aluminum, and bronze.

Weight: From 10 grams to 20 kilograms.

Good experience on designing according to customer's requirements.

Excellent and high quality control.

Competitive price.

Small order acceptable.

On-time delivery.



carbon steel investment casting part stainless steel investment casting part



aluminum investment casting part bronze investment casting part



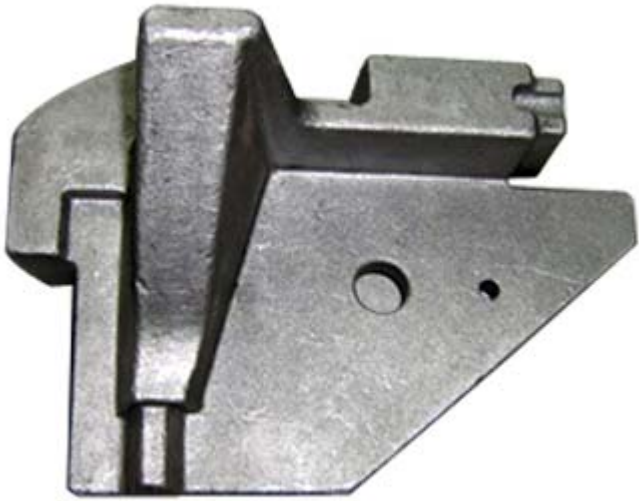
[Precision Investment casting machining parts](#)



[Precision Investment casting machining part](#)



[Investment casting machining](#)



[Investment casting machining part](#)



[Investment casting machining parts-02](#)



[Investment casting machining parts-01](#)



[Investment casting machining parts-pro](#)

[Machine parts](#), [china sewing machine parts](#) , [machine spare parts](#) , [Precision machining](#), [Precision grinding](#) , [Micro machining](#) , [Industrial spare parts](#), [Industrial equipment](#) , [Industrial products](#) , [Engineering machine parts](#), [Cnc engineering](#) , [Mechanical engineering](#) , [Marine metal parts](#), [Marine engine parts](#) , [Marine hull parts](#) , [Construction metal parts](#), [Residential construction metal parts](#) , [Roofing metal parts](#) , [Precision machine parts](#), [Precision machined parts](#) , [Precision metal parts](#) , [Printing machine parts](#), [Printing equipment parts](#) , [Digital printing machines parts](#) , [Embroidery machine parts](#), [Commercial embroidery machine parts](#) , [Computerized embroidery machine parts](#) , [All different machine parts](#), [all different machine part](#) , [Sewing machine parts](#), [industrial sewing parts](#) , [sewing needle parts](#) , [Plastic machine parts](#), [Textile machine parts](#), [Textile equipment parts](#) , [Knitting machine parts](#) , [Mill machine parts](#), [Cnc mill parts](#) , [Cutting machine parts](#), [Metal cutting parts](#) , [Cutting equipment parts](#) , [CNC machine parts](#), [Cnc lathe parts](#) , [Custom machine parts](#), [Custom machines parts](#) , [Transmission components parts](#), [Screw Machine Parts](#), [Screw machine products parts](#) , [Casting parts](#), [die casting parts](#) , [Sand casting machining parts](#), [sand casting proces](#) , [Gravity casting machining parts](#), [Metal casting parts](#) , [Pressure die casting part](#), [Investment casting machining parts](#), [Investment casting parts](#) , [Aluminum casting](#), [Aluminum die casting](#) , [die casting machining parts](#), [Die casting part](#) , [Stamping part](#), [Metal stamping parts](#), [Sheet metal stamping](#), [Stamping mold](#), [Iron stamping parts](#), [Steel stamping part](#), [Aluminum stamping part](#), [Brass stamping part](#), [Extrusion part](#), [Brass extrusion parts](#), [Brass extrusions parts](#) , [Aluminum extrusion part](#), [Aluminum extruded part](#) , [Aluminum profile extrusion part](#) , [Forging parts](#), [Hot forging parts](#), [precision forging parts](#) , [Cold forging parts](#), [Cold forging part](#) , [Power juicer](#), [PC 700](#),

Ningbo Zhenhai Xinxie Machinery Co.,Ltd
Add: Gengyu road, Guisi, Luotuo, Zhenhai, China
Contact: ROSE

Tel: 0574-86556928 86556922

Fax: +86-574-86551791

E-mail: sales@china-machineparts.com

WebSite: <http://www.china-machineparts.com>
